

Tougher. More Reliable. Smarter.

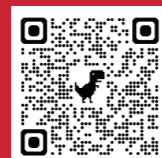


YANGZI Warehouse Handling Equipment Catalogue

Tougher. More Reliable. Smarter.



Anhui Yangzi Intelligent Manufacturing Co.,Ltd.



CONTACT US

Mobile / Whatsapp : +86 19966157838

E-mail : info@yangziindustry.com

Tougher. More Reliable. Smarter.

— Designed for Extreme Working Conditions —



CB-1501 Product features



All-Terrain Conqueror

Equipped with an innovative overhead horizontal motor and professional off-road wide tires, this unit easily climbs 8° slopes with stable ascent even when fully loaded. With a 100mm wading depth, it handles standing water, slippery cold rooms and oily workshop floors, Lift Mastering all tough terrains with ease.



Steel Protection, Durable Guarding

Featuring a fully sealed structure, all key components have passed stringent water and dust tests. The service life is extended by 20% over conventional models. It delivers stable performance in harsh environments including humidity, dust and low temperatures, greatly cutting your maintenance expenses.

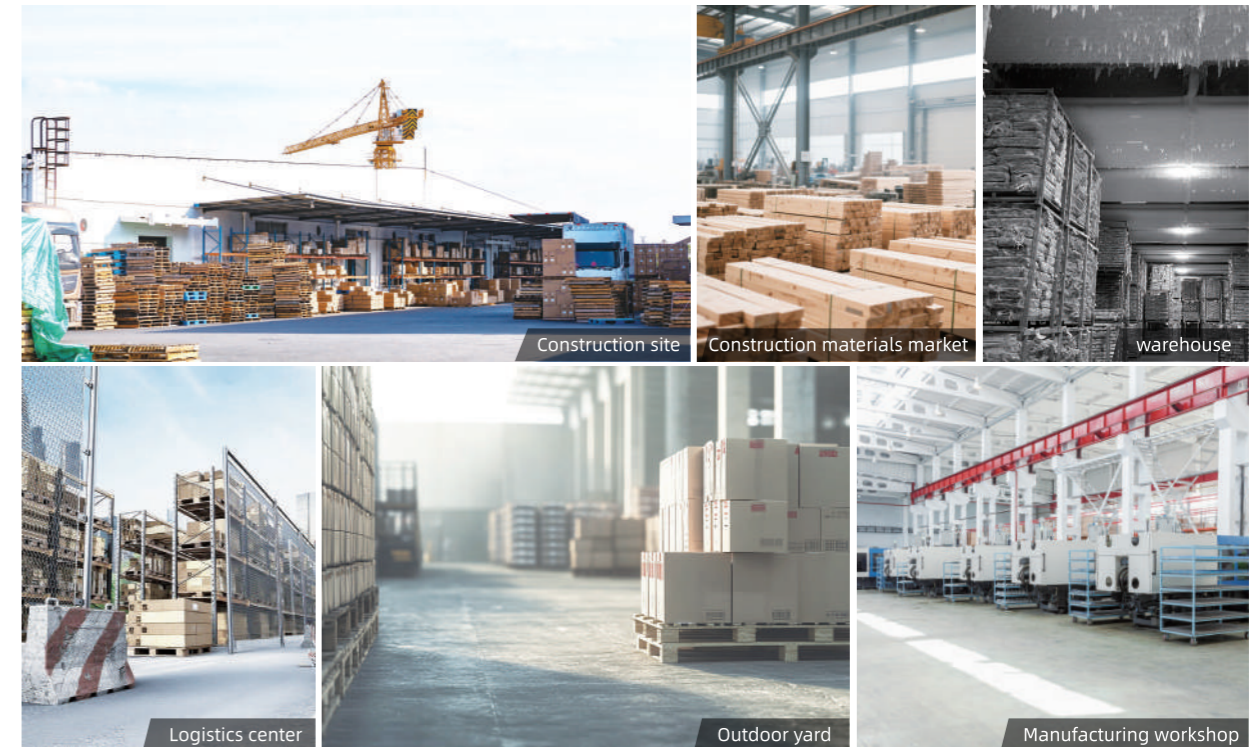


Intelligent Safety, Rock-solid stability

Anti-slip slope system: automatic parking on ramps eliminates slippage risks for safer handling.
Reinforced fork head: high load resistance against deformation; equipped with 9mm wide load wheels, it greatly enhances running stability.
Electric lifting limit: precisely controls Lifting Height, prevents over-travel, and safeguards operators and cargo.



Application Scenarios



Product Specification

Industrial Truck Data (VDI2198)				
Model	/	CB-1501XS	CB-1501XE	
Power source	/	Electric	Electric	
Operation type	/	Walk-behind	Walk-behind	
Rated Rated Load	Q (kg)	1500	1500	
Load center distance	c (mm)	600	600	
Service Weight	kg	130	130	
Lifting Height	h3 (mm)	195	195	
Lowered Fork Height	h13 (mm)	82	82	
Overall length	l1 (mm)	1560	1560	
Overall width	b1 (mm)	685	685	
Fork dimensions	T/W/L (Thickness/Width/Length)	60/160/1150	60/160/1150	
Overall fork width	b5 (mm)	685	685	
Aisle width 800*1200 pallet along forks (200 safety clearance)	Ast (mm)	2005	2005	
Turning radius	Wa (mm)	1360	1360	
Travel speed loaded/unloaded	km/h	4.0/4.4	4.0/4.4	
Lifting speed loaded/unloaded	m/s	0.016/0.021	0.016/0.021	
Lowering speed loaded/unloaded	m/s	0.05/0.026	0.05/0.026	
Max gradeability loaded/unloaded	%	6/20	6/20	
Battery voltage & rated capacity	V / Ah	24/20	24/20	

Tougher. More Reliable. Smarter.

— Making Heavy-Duty Handling More Efficient and Safer —



CB-1502 Key Features



Reinforced Structure, Built to Last

The integrated stamped fork-leg plate is engineered with a 4 mm thickened steel plate and 5 mm upright steel plate, increasing torsional resistance by 50%. It remains stable and deformation-free under a 1.5-ton load.

A high-strength steel frame with 4 mm outer panels provides excellent resistance against impacts, collisions, and scratches, extending service life by up to three times. The offset integrated cylinder design fully encloses the hydraulic and electrical systems, eliminating exposed oil pipes and wiring harnesses. This helps reduce failure rates by up to 80%.



Powerful Drive, Easy Obstacle Crossing

Equipped with a 24V DC permanent-magnet motor and a 220 mm large-diameter drive wheel, the truck delivers excellent climbing performance up to 15°. It moves smoothly across gravel roads and speed bumps.

The high-resilience PP drive wheel resists impact and deformation, protects the motor from foreign-object intrusion, and adapts well to harsh environments such as construction sites.



All-Condition Adaptability, Reliable Protection

The load-wheel dust-cover design effectively prevents gravel, sand, and dust from entering the wheel system, extending operating life. It is especially suitable for construction sites, warehouses, outdoor yards, and other dusty, demanding environments.

With no exposed moving parts, the highly integrated system eliminates rotating linkage structures, making maintenance easier while ensuring long-term stable performance.



Steel Protection, Long-Lasting Reliability

The fully sealed structure protects key components through rigorous waterproof and dustproof testing. Compared with conventional models, the machine's service life is increased by 20%. It continues to operate reliably in humid, dusty, low-temperature, and other harsh environments, significantly reducing equipment maintenance costs.



Application Scenarios



Product Specifications

Industrial Truck Data (VDI2198)

Model	/	CB-1502XS	CB-1502XE
Power Type	/	Electric	Electric
Operation Type	/	Walk-behind	Walk-behind
Rated Rated Load	Q (kg)	1500	1500
Load Center	c (mm)	600	600
Service Weight	kg	180	180
Lifting Height	h3 (mm)	195	195
Fork Height, Lowered	h13 (mm)	82	82
Overall Length	l1 (mm)	1650	1650
Overall Width	b1 (mm)	685	685
Fork Dimensions	^T / _W / _L (Thickness/Width/Length)	60/160/1150	60/160/1150
Overall Fork Width	b5 (mm)	685	685
Aisle Width for 800×1200 Pallet, Load Lengthwise, 200 mm Safety Clearance	Ast (mm)	2005	2005
Turning Radius	Wa (mm)	1450	1450
Travel Speed, Laden/Unladen	km/h	4.0/4.4	4.0/4.4
Lift Speed, Laden/Unladen	m/s	0.015/0.020	0.015/0.020
Lowering Speed, Laden/Unladen	m/s	0.05/0.024	0.05/0.024
Maximum Gradeability, Laden/Unladen	%	6/20	6/20
Battery Voltage / Rated Capacity	V / Ah	2*12/61	2*12/61

Tougher. More Reliable. Smarter.

— Economical Choice with Outstanding Performance | Cost-effective Pallet Truck —



CB-2001 Features



Long Runtime | Power-saving

Low energy consumption and long runtime. Equipped with a high-efficiency motor and intelligent energy management system, significantly improving battery endurance for long working hours on a single charge.

Improved battery heat dissipation and optimized vehicle passability. Suitable for different working environments and low-clearance areas.

Equipped with branded maintenance-free battery. Standard 48V/52Ah lithium battery, stable and reliable, with optional 83Ah large-capacity version for longer operation.



Five-point Shock Absorption | Powerful Performance

Five-point structure with floating drive system ensures smoother driving performance.

Floating drive mechanism effectively reduces vibration, providing smoother transition and better climbing stability.

Robust structure with integrated controller design. The 48V/200A high-integration controller features simplified wiring, low failure rate, and easier maintenance.



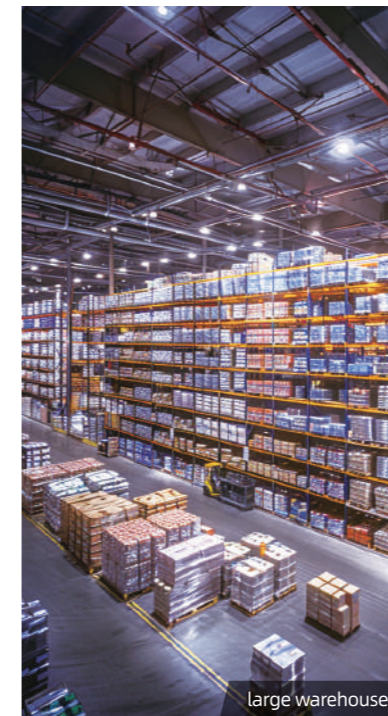
Intelligent Control | Enhanced Safety

High-power drive system equipped with 48V 1.5kW brushless drive motor, delivering strong power, stable operation, and powerful start under heavy load.

Multifunction smart handle integrates operation and safety functions, featuring precise control response and user-friendly operation.



Application Scenarios



Specifications

Industrial Truck Data (VDI2198)		
Model	/	CB-2001LS
Power Type	/	Electric
Operation Type	/	Stand-on Walkie
Rated Rated Load	Q (kg)	2000
Load Center Distance	c (mm)	600
Service Weight	kg	580
Lifting Height	h3 (mm)	200
Lowered Fork Height	h13 (mm)	85
Overall Length	l1 (mm)	1835
Overall Width	b1 (mm)	729
Fork Dimensions	T/W/L (Thickness/Width/Length)	60/173/1150
Fork Outside Width	b5 (mm)	540
Aisle Width for 1000×1200 Pallet (200mm Clearance)	Ast (mm)	2250
Turning Radius	Wa (mm)	1750
Travel Speed Laden/Unladen	km/h	5.4/5.8
Lift Speed Laden/Unladen	m/s	0.025/0.03
Lowering Speed Laden/Unladen	m/s	0.026/0.024
Maximum Gradeability Laden/Unladen	%	6/10
Battery Voltage / Rated Capacity	V / Ah	4*12/52

Tougher. More Reliable. Smarter.

— All-condition Stacker Truck: Stable, and Even More Practical —



CD-1501 Performance Characteristics



Chassis design of low gravity center

To optimize chassis structure significantly and lower the vehicle's center of gravity, greatly improving driving and operational stability, making turning and transporting more stable and safer.



5 times stronger load-bearing chain system

Adopting a Forklift-specific thickened plate chain with a 4x4 reinforced structure, capable of withstanding more than 5 times the rated load in traction. Robust and durable, capable of handling high-intensity, repetitive operations.



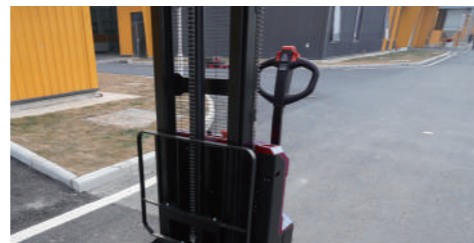
H-type reinforced inner Lift Mast

Specially designed for Forklift lifting, the Lift Mast has stronger rigidity and less deformation when the truck is fully loaded and stacked, thus improving the safety and overall stability of high-level operations.



Convenient auxiliary wheel adjustment

The unique auxiliary wheel adjustment design allows for easy adjustment without lifting the entire vehicle, saving time on maintenance and making daily maintenance more user-friendly.



Strong climbing performance

With a full-load climbing ability of up to 5%, and ample driving torque, it can easily handle various working conditions such as slopes and uneven ground, expanding the vehicle's application scenarios.

Applicable Scenarios

Manufacturing



Product Parameters

Industrial Truck Data (VDI2198)		
Model	/	CD-1501XS
Power source	/	Electric
Driving type	/	Walk-behind
Rated Rated Load	Q (kg)	1500
Load center distance	C(mm)	500
Service Weight (including battery)	kg	560
Lift Mast retracted height	h1 (mm)	1932
Lifting Height	h3 (mm)	2900
Lowered Fork Height	h13mm	87
Overall length	l1(mm)	1760
Overall width	b1(mm)	820
Fork size	T/W/L (Thickness/Width/Length)	60/180 /1150
Distance between fork arms	b5 (mm)	570
Aisle width 1000*1200 (with forks, 200 safety distance)	Ast (mm)	2324
Aisle width 800*1200 (with forks, 200 safety distance)	Ast (mm)	2269
Turning radius	Wa (mm)	1520
Travel speed (full load/no load)	km/h	4.3/4.6
Lifting speed (full load/no load)	m/s	0.07/0.14
Lowering speed (full load/no load)	m/s	0.125/0.117
Maximum Gradeability (full load/no load)	%	5/10
Battery voltage, rated capacity	V/Ah	2x12/61-3hr

Tougher. More Reliable. Smarter.

— Designed for People, Built on Stability, A New Generation of Safe and Comfortable Forklifts —



CD-1501 Performance Highlights



Ergonomic Operation, Comfortable for Continuous Use

Intelligent Handle: Ergonomically designed control system provides a comfortable grip and precise, responsive control, significantly reducing operator fatigue during prolonged operation.

Foldable Pedals: Designed with effective shock absorption to minimize the impact of uneven ground, ensuring a smooth and comfortable ride for the operator.



Comprehensive Protection, Safety on the Go

Emergency Power Cut-off Switch: Easily accessible emergency protection; a single press immediately cuts off power in emergency situations, ensuring the safety of personnel, the vehicle, and cargo.

Built-in Charging Design: Eliminates dependence on external charging equipment, enhances operational continuity, and extends the vehicle's effective working range and scheduling flexibility.



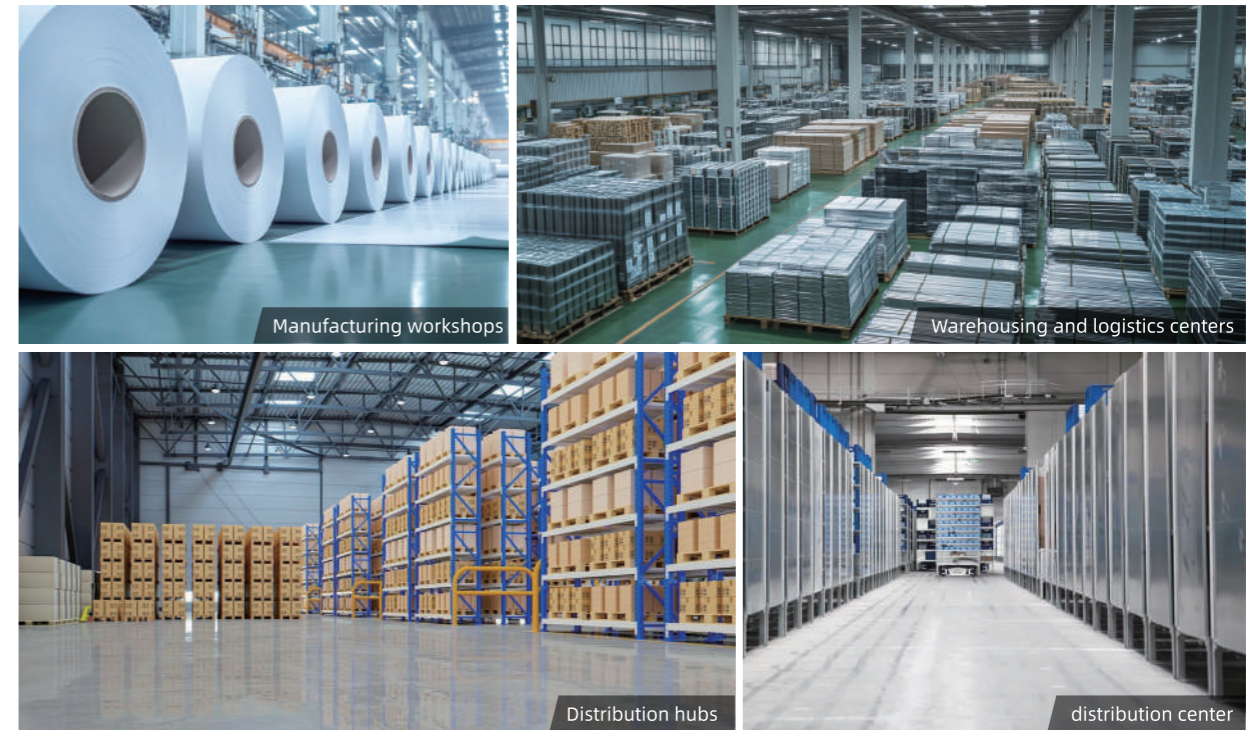
Robust Structure, Reliable Load-Bearing Capacity

Reinforced Chassis with 8 mm Protective Side Panels: The robust structure effectively resists external impacts, protects key components, and extends the overall service life of the vehicle.

Thickened Channel Steel Lift Mast: Provides stable lifting performance even under heavy loads, with minimal Lift Mast sway, ensuring precision and safety during high-level handling operations.



Applications



Cold storage facilities

Industrial Truck Data (VDI2198)

Model	/	CD-1501LS
Power	/	Electric
Operation type	/	Stand-on Walkie
Rated Load	Q (kg)	1500
Load center distance	C(mm)	500
Service Weight (including battery)	kg	712
Lift Mast lowered height	h1 (mm)	1932
Lifting Height	h3 (mm)	2900
Lowered Fork Height	h13mm	85
Overall length	l1(mm)	1865
Overall width	b1(mm)	820
Fork dimensions (s/e/l)	T/W/L (Thickness/Width/Length)	60/180/1150
Distance between fork arms	b5 (mm)	570
Aisle width for 1000x1200 pallet lengthwise (200 safety distance)	Ast (mm)	2330
Aisle width for 800x1200 pallet lengthwise (200 safety distance)	Ast (mm)	2275
Turning radius	Wa (mm)	1455
Travel speed - laden/unladen	km/h	4.0/4.3
Lifting speed - laden/unladen	m/s	0.09/0.129
Lowering speed - laden/unladen	m/s	0.14/0.086
Maximum Gradeability - laden/unladen	%	5/10
Battery voltage / rated capacity	V/Ah	2x 12/105-20hr

Tougher. More Reliable. Smarter.

— Compact Size, Big Power, All-Rounder for Efficient Operations —



Application Scenarios



CP-0601 Performance Features

Flexible Maneuvering, Worry-Free Operation in Tight Spaces

Compact body, small turning radius and aisle width, easily adapts to confined workspaces. Ultra-narrow body design offers an exceptionally wide view, keeping cargo conditions clearly visible at all times.

Optimized Self-Service Weight, Effortless Access to Multi-Level Operations

Scientifically optimized self-Service Weight, elevator-accessible, meeting the needs of multi-level operations.

Adaptable to Complex Conditions, Unimpeded Travel on Uneven Ground

Counterbalance design with side-by-side load wheels; the fork carriage can be widened per special requirements, compatible with most pallets.

Customized Adaptation, Meeting Diverse Pallet Requirements

Counterbalance design with side-by-side load wheels; the fork carriage can be widened per special requirements, compatible with most pallets.

Efficient & Durable, Lower Hydraulic System Loss

Simplified hydraulic piping system with low wear, ensuring long-lasting durability.

Convenient Operation, Effortless & Safe Steering

Long handle design makes steering easier than with a tiller arm, ensuring safe and labor-saving operation.

Flexible Charging, Built-In System for Any-time Power Top-Up

Built-in charger enables convenient charging, "charge-and-go" functionality without extra complicated operations.



Product Parameters

Industrial Truck Data (VDI2198)		
Model	/	CP-0601XS
Power Type	/	Electric
Driving Mode	/	Walk-behind
Rated Load	Q (kg)	600
Load Center Distance	C(mm)	500
Service Weight (Including Battery)	kg	1175
Height with Lift Mast Retracted	h1 (mm)	2110
Lifting Height	h3 (mm)	3200
Fork Height at Lowered Position	h13mm	80
Overall Length	l1(mm)	2165
Overall Width	b1(mm)	790
Fork Dimensions	T/W/L (Thickness/Width/Length)	35/100/960
Distance Between Fork Arms	b5 (mm)	220-710
Aisle Width for 1000x1200 Pallet, Forks Along Pallet (200mm Safety Clearance)	Ast (mm)	2630
Aisle Width for 800x1200 Pallet, Forks Along Pallet (200mm Safety Clearance)	Ast (mm)	2740
Turning Radius	Wa (mm)	1175
Travel Speed (Loaded/Unloaded)	km/h	3.9/4.3
Lifting Speed (Loaded/Unloaded)	m/s	0.1/0.137
Lowering Speed (Loaded/Unloaded)	m/s	0.13/0.13
Maximum Gradeability (Loaded/Unloaded)	%	5/8
Battery Voltage & Rated Capacity	V/Ah	2x12/114-10hr

Tougher. More Reliable. Smarter.

— High Rated Load, Stable as a Mountain —



JCPT Self-Propelled Scissor Aerial Work Platform Performance Features

Flexible & Efficient Movement

Built-in travel and lift functions, no manual towing or external power required, operable by a single person; the scissor arms extend the platform quickly, with the industry's smallest turning radius (within 4m wheelbase). The compact design enables free operation in tight spaces, and 25% gradeability ensures smooth travel on slopes.

Full Safety Protection

Lifting cylinders are equipped with burst valves and anti-leakage systems for smooth lowering. It also features tilt protection, emergency lowering, automatic braking, emergency stop, platform self-locking gate, fault diagnosis, and multiple safety systems, complying with CE standards for safe and reliable operation.

Easy & Hassle-Free Maintenance

Rotating chassis + drawer-type power tray, with universal modular design for components; automatic fault code display for efficient troubleshooting; maintenance-free batteries extend service life and reduce operation & maintenance costs.

Stable & Durable Structure

Six-hole riveting process for support rods ensures high precision, small errors, and minimal sway during aerial work. The body features electrophoretic anti-rust treatment + automotive-grade spraying, offering excellent corrosion resistance and a longer service life.

Convenient Transportation & Storage

Detachable guardrail design significantly reduces the overall size, facilitating transportation, storage, and relocation.



Application Scenarios



Malls / Supermarkets / Stadiums / Exhibition Halls :
Lighting Installation, Ceiling Maintenance, Air Conditioning Duct Construction



Office Buildings / Hotels / Apartments :
Wall Maintenance, Fire Piping, Wiring Inspection, Cleaning Operations



Factories / Warehouses / Logistics Centers :
Equipment Maintenance, Rack Installation, Cargo Stowing, Pipeline Laying



Stations / Airports / Metro Stations :
Signage Installation, Lighting Repair, Facility Maintenance

Product Parameters

JCPT Self-Propelled Scissor Lifting Platform					
Model	JCPT06	JCPT08	JCPT10	JCPT12	JCPT14
Safe Working Load (SWL)	450kg	450kg	320kg	320kg	230kg
Safe Working Load of Extending Platform	113kg	113kg	113kg	113kg	110kg
Maximum Number of Operators	4	4	3	3	2
Maximum Working Height (A)	8m	10m	12m	13.8m	15.8m
Maximum Platform Height (B)	6m	8m	10m	11.8m	13.8m
Overall Length (C)	2.43m	2.43m	2.43m	2.43m	2.85m
Overall Width (D)	1.21m	1.21m	1.21m	1.21m	1.31m
Overall Height (Guardrail Upright)	2.22m	2.35m	2.47m	2.6m	2.62m
Overall Height (Guardrail Folded) (E)	1.67m	1.8m	1.93m	2.06m	2.06m
Work Platform Dimensions (LxW) (F)	2.27m*1.12m	2.27m*1.12m	2.27m*1.12m	2.27m*1.12m	2.7m*1.11m
Platform Extension Size (G)	0.9m	0.9m	0.9m	0.9m	0.9m
Minimum Ground Clearance (Folded State)	0.1m	0.1m	0.1m	0.1m	0.1m
Minimum Ground Clearance (Lifted State)	0.019m	0.019m	0.019m	0.015m	0.015m
Wheelbase	1.87m	1.87m	1.87m	1.87m	2.28m
Minimum Turning Radius (Inner Wheel)	0	0	0	0	0
Minimum Turning Radius (Outer Wheel)	2.40m	2.40m	2.40m	2.40m	2.40m
Lifting Motor / Drive Motor	24v/4.5kw	24v/4.5kw	24v/4.5kw	24v/4.5kw	24v/4.5kw
Travel Speed (Folded State)	3.5km/h	3.5km/h	3.5km/h	3.5km/h	3.5km/h
Travel Speed (Lifted State)	0.8km/h	0.8km/h	0.8km/h	0.8km/h	0.8km/h
Lifting / Lowering Speed	100/80 sec	100/80 sec	100/80 sec	100/80 sec	100/80 sec
Battery	4x6V/200Ah	4x6V/200Ah	4x6V/200Ah	4x6V/200Ah	4x6V/240Ah
Charger	24v/30A	24v/30A	24v/30A	24v/30A	24v/30A
Maximum Gradeability	25%	25%	25%	25%	25%
Maximum Allowable Working Angle	X1.5°/Y3°	X1.5°/Y3°	X1.5°/Y3°	X1.5°/Y3°	X1.5°/Y3°
Tires	φ381*127	φ381*127	φ381*127	φ381*127	φ381*127
Overall Weight	2250kg	2350kg	2550kg	2980kg	3670kg

Tougher. More Reliable. Smarter.

—High-strength, High-quality Products. The First Choice for Lifting Equipment—

EMP Electric-Drive Scissor Lift Platform Product Performance

Operation Without Power Supply

An optional manual pump is available, allowing normal operation even in power-outage or no-power scenarios, so work is never interrupted.

Flexible Dual-End Control

The electric lift can be equipped with remote control. Personnel on the ground or on the platform can operate independently, enabling more efficient single-person continuous high-altitude work.

Multiple Safety Features

The oil cylinder is equipped with a pressure-releasing anti-fall valve for smooth descent in case of failure. It is also equipped with tilt protection, emergency lowering, automatic braking, emergency stop, fault diagnosis, and other systems for safe and reliable operation.

Industry-Leading Drive Performance

Equipped with a high-quality drive axle with a differential, a pioneer in the application of professional axle technology for more stable and smooth movement and control.

Stable Support Without Shaking

Alloy outriggers with a level gauge enable quick leveling and strong support, ensuring greater stability during high-altitude work.

Upgraded Control and Durability

The electric-drive version comes with a multi-function handle and thickened solid wheels that are pressure-resistant, wear-resistant, anti-slip, and wet-proof, making long-term use worry-free.

Practical and Safe Disassembly

The detachable guardrail design facilitates storage and transportation, while also improving operational safety.



Application Scenarios



Warehouses / Logistics Centers :
Rack installation, goods stacking, equipment maintenance.



Cold Chain Warehouses / Constant Temperature Warehouses :
Battery-powered, with strong adaptability to low-temperature environments.



Residential Areas / Industrial Parks / Campuses :
Street light maintenance, surveillance camera installation, exterior wall cleaning, green pruning.



Metro Stations / High-Speed Railway Stations / Airports :
Facility maintenance, signage installation, daily inspection and repair.



Small Municipal Projects / Park Renovation:
Line maintenance, security installation, exterior wall painting.



Construction Site Interior Decoration / Water & Electricity Installation :
No external power supply required, easy on-site transfer.

Product Parameters

EMP Electric-Drive Scissor Lift					
Model	Unit	EMP0.5-7A	EMP0.5-9A	EMP0.5-11A	EMP0.3-13A
Rated Platform Load	kg	500	500	500	300
Maximum Platform Height	mm	7000	9000	11000	12850
Minimum Platform Height	mm	1120	1240	1370	1495
Work Platform Size	mm	2150×1140			
Outrigger Span	mm	2130×2890			
Lifting Motor	v/kw	48/2.2			
Drive Motor	v/kw	48/2.5			
Voltage	v	48			
Travel Speed	km/h	3.5-4.5			
Maximum Gradeability	%	10 ~ 15			
Battery	v/Ah	12/70×4 pcs			
Charger	v/A	Oct-48			
Overall Length	mm	2250			
Overall Width	mm	1300			
Overall Height	mm	2120	2240	2370	2495
Overall Service Weight	kg	1120	1320	1680	1980

Tougher. More Reliable. Smarter.

—Smart Control. Sturdy & Practical—



CPD Counterbalance Forklift Truck Performance Features

Comfortable Ride, Standard Across the Line

All models come standard with intelligent ergonomic seats to prevent fatigue during long shifts. The enlarged and thickened engine hood provides superior noise reduction and heat insulation.



Ultra-Short Wheelbase, Flexible Maneuvering

The unique ultra-short wheelbase design delivers a smaller turning radius, enabling easy U-turns and significantly improved operational efficiency in narrow aisles and high-density warehouses.



Intuitive & Easy-to-Use Smart Control

The new operator platform is equipped with a liquid crystal instrument display. The interface is clear and straightforward, providing at-a-glance vehicle status for easier operation.

Thickened Frame, Durable & Sturdy

The vehicle frame is constructed from 14mm thick steel plates for enhanced torsion and bending resistance, ensuring stable heavy-load operation and extending the service life of the machine.

High-Efficiency Motor, Upgraded Battery Life

Equipped with a permanent magnet synchronous motor for +5% efficiency, +5% endurance, stronger power, lower energy consumption, and longer operating time.

Application Scenarios



Warehousing & Logistics Centers:
Flat warehouses, automated racking areas, e-commerce sorting centers; for loading/unloading, stacking, and transporting goods.



Factory Workshops:
Handling of production materials, finished goods warehousing, and internal plant logistics; ideal for assembly line integration.



Large Supermarkets / Cold Chain Warehouses :
Handling goods in supermarket receiving areas and cold storage facilities, with stable performance in low-temperature environments.



Ports & Logistics Parks:
Container destuffing, short-haul cargo transfer, and yard goods transportation.



Construction Sites:
Short-distance handling and loading/unloading of heavy materials such as building supplies, pipes, sand, and equipment.



Wholesale Markets / Trade Centers:
Loading, unloading, and transporting bulk goods including fruits, vegetables, hardware, building materials, and furniture.

Product Parameters

Electric Counterbalance Forklift		
Model	CPD30	CPD35
Rated Load kg	3000	3500
Load Center Distance mm	500	500
Maximum Lifting Height mm	3000	3000
Free Lifting Height mm	140	145
Lift Mast Tilt Angle (Forward/Backward)°	6/12	6/12
Maximum Lifting Speed (Unloaded/Loaded) mm/s	400/320	400/280
Maximum Travel Speed (Unloaded/Loaded) Km/h	14/12.5	14/12
Maximum Gradeability (Unloaded/Loaded) %	15/15	15/15
Minimum Turning Radius mm	2480	2520
Service Weight (Including Battery) kg	4150	4400
Wheelbase (Bracket refers to inner/outer tire) mm	1760 (1700)	1760 (1700)
Front/Rear Overhang mm	475/515	480/560
Length (Forks Removed) mm	2750	2800
Width (Tire Outer Width) mm	1220	1220
Height (Lift Mast Lowered) mm	2060	2060
Overhead Guard Height mm	2170	2170
Rated Voltage V	80	80
Battery Capacity Ah	205 (280) (350)	280 (350) (460)
Traction Motor Kw	12 (Asynchronous) / 15 (Permanent Magnet Synchronous)	12 (Asynchronous) / 15 (Permanent Magnet Synchronous)
Lift Motor Kw	16 (Asynchronous) / 18 (Permanent Magnet Synchronous)	16 (Asynchronous) / 18 (Permanent Magnet Synchronous)
Front Tire Spec.	28x9-15-14PR	28x9-15-14PR
Rear Tire Spec.	6.50-10-10PR	6.50-10-10PR
Fork Size (Length x Width x Thickness) mm	1070x125x45	1070x125x50
Hydraulic System Working Pressure MPa	17.5	17.5

Tougher, More Reliable, Smarter

— Three-way Forks for Higher Efficiency in Narrow Aisle Operations —



Performance Features of Narrow Aisle Stacking 3-Way Forklift

Operates smoothly in narrow aisles without turning.

Minimum working aisle width: only 1500mm. Forks can rotate 180° and shift left/right, eliminating the need to turn around during three-way stacking

6-meter Lifting Height for High-level Stacking

Max lifting height up to 6000mm, ideal for high-bay warehouses, greatly improving space utilization.

Side-standing Operation for Easy Control

Side-standing design for lighter electric steering. Multi-function instrument panel displays real-time vehicle status.

3-Way Forks for Flexible Operation

Forks can shift left/right and rotate 180°, enabling precise positioning in narrow aisles for efficient stacking.

Imported Control System

Equipped with American CURTIS AC drive system for stable power, fast response, and low failure rate.

Wide-view Mast with Shock Absorption

High-strength shock-absorbing mast with wide-angle visibility, ensuring stable and safe high-lift operations.

Corner Speed Reduction for Safety

Automatic speed reduction on corners, no sharp acceleration/ deceleration, with multiple safety protections for worry-free operation.

Large-capacity Battery for Strong Endurance

48V high-capacity lead-acid battery for long-lasting power, supporting full-day continuous operation. Optional lithium battery available.

Self-diagnosis for Easy Maintenance

Automatic fault detection with error codes displayed directly, simplifying troubleshooting and maintenance.

Two Load Capacities Available

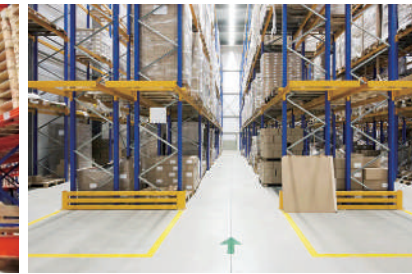
1.0-ton and 1.5-ton models to meet different cargo handling requirements.

Application Scenarios



High-bay Racking Warehouses:

Designed for 6-meter high racking, ideal for high-density storage, significantly improving space utilization.



Narrow Aisle Warehouses:

Operates in aisles as narrow as 1.5 meters with no large turning radius, maximizing warehouse space efficiency.



E-commerce Logistics Centers:

High throughput, fast turnover, and three-way forks enable efficient operation without congestion.



Factory Floor Handling:

Narrow internal aisles and light/medium loads make it ideal for production line logistics and efficient material transfer.



Hardware, Building Materials, Pharmaceutical & Food Warehouses:

Heavy goods, high stacks, and narrow aisles: three-way forks offer greater stability, safety, clean operation, low noise, zero emissions, and compliance with high hygiene standards.



Automated 3D Warehouses:

Integrates with automated racking systems for precise positioning and unmanned handling.

Product Specifications

CPD Counterbalance Forklift			
Model	/	YZ-CSD10	YZ-CSD15
Drive Type	/	Lead-Acid Battery	Lead-Acid Battery
Operation Type	/	Side-standing	Side-standing
Rated Capacity	Q(kg)	1000	1500
Max. Lifting Height	h3(mm)	6000	6000
Overall Length	L1(mm)	2815	2965
Overall Width	b1/b2	1450	1575
Mast Closed Height	h1(mm)	3350	3320
Fork Size	^T / _W / _L (Thickness/Width/Length)	40/122/1070	45/125/1200
Free Lift Height	h2(mm)	2050	2095
Max. Mast Height (With Load Backrest)	h4(mm)	7340	7200
Battery (Voltage / Rated Capacity)	V/Ah	48/400	48/420
Service Weight (With Battery)	kg	5150	6150
Drive Motor Power (S2-60min)	kw	4.5(AC)	6.5(AC)
Lift Motor Power	kw	6.3(DC)	8.6(DC)
Wheel Tread (Drive Side)	mm	805	805
Wheel Tread (Load Side)	mm	1220	1323
Wheelbase	y(mm)	1605	1700
Load Center	c(mm)	500	600
Front Overhang	x(mm)	618	645
Turning Radius	Wa(mm)	1870	1965
Stacking Aisle Width (1T pallet 1000×1000 / 1.5T pallet 1200×1200)	Ast1(mm)	1500	1620
Minimum Working Aisle Width (1T pallet 1000×1000 / 1.5T pallet 1200×1200)	Ast2(mm)	3400	3625
Axle Load at Full Load (Drive / Load Side)	kg	945/3975	2410/5240
Axle Load at No Load (Drive / Load Side)	kg	2045/1275	2980/3170
Travel Speed (Full / No Load)	km/h	7.8/8	7.8/8
Lifting Speed (Full / No Load)	mm/s	140/260	140/300
Lowering Speed (Full / No Load)	mm/s	300/160	300/160

Tougher, More Reliable, Smarter

— Heavy-load Lifting, Adaptable to All Scenarios —



L300 Intelligent Lifting Mobile Robot

Heavy-duty Performer: Faster Lifting & Handling

- Rated for 300kg maximum load, easily handling heavy materials and cargo transfer in factories, warehouses and other scenarios.
- 50mm lifting height + 5mm/s stable lifting speed, compatible with standard 920×800×423mm trays. Supports customized tray fixtures to meet diverse scenarios.

All-environment Adaptable: Stable Operation in Harsh Conditions

- Excellent environmental adaptability: -10°C~65°C working temperature, UV resistance, corrosion resistance, -20°C~65°C storage temperature, suitable for all seasons in north and south China.
- Outdoor operation in compliant zones: 20mm obstacle crossing, 8° climbing capability, 35mm ground gap adaptation, stable travel even on unpaved surfaces.

Long Battery Life: 7×24 Continuous Operation

- 24V/30000mAh high-capacity power battery, single charge lasts up to 9 hours, meeting full-day high-load operation requirements.
- Supports automatic recharging with dedicated charger in 5.5 hours, enabling 7×24 non-stop operation with no downtime.

Precise Intelligent Navigation: Stress-free Travel in All Scenarios

- Millimeter-level ultra-high positioning accuracy: ±5mm position accuracy / ±1° angle accuracy, ensuring precise alignment and zero error in operation.
- 1.2m/s adjustable travel speed, with optimal efficiency and safety. Can navigate through aisles as narrow as 75cm, including elevators and narrow spaces.



Full-link Intelligent Management: Easier Remote Control

- Lightweight mobile management: Control via WeChat mini-program/APP remotely, no need to download extra software. Supports real-time command dispatch, map editing and visualized task statistics, monitoring anytime anywhere.
- Real-time data visualization dashboard: Displays robot status and operation statistics comprehensively for clearer management decisions.

Powerful Expansion Capability: Customizable for All Scenarios

- Rich peripheral integration: Supports automatic doors, elevators, voice prompts, speakers, buzzers, handsets, rollers, cabinets, pallets and other full-category hardware docking for one-stop full-process logistics.
- Full network coverage: 4G full-band + 5G expandable + 2.4G & 5GHz dual-band WiFi + Bluetooth 5.0 BLE, ensuring stable indoor/outdoor network connection.

Hard-core Safety Configuration: Safer Stable Operation

- 10.1-inch HD touchscreen, 1280×800 resolution, easy operation.
- Stable system support: Android 11 + Linux dual system, ensuring compatibility and stability, meeting industrial-level standards with no lag or jitter during long-hour operation.

Application Scenarios



Product Specifications

L300 Intelligent Lifting Mobile Robot Specifications

Category	Type	Parameter
Basic Specs	Dimensions (LxWxH)	900*600*1240 (mm)
	Machine Weight	100kg
	Exterior Material	ABS、Sheet Metal
Load	Tray Configuration	Standard Tray Size: 920*860*423 (mm)
	Rated Load	300kg
	Lifting Height	50mm
	Lifting Speed	5mm/s
Working Temperature	-10°C~65°C; UV-resistant; Corrosion-resistant	
Display & Control	10.1-inch Screen Resolution 1280×800	
Operating System	Android 11+ Linux(Ubuntu)	
Sensors	LiDAR	Range: 360°, Detection Distance: 0.02~40m
	Depth Camera	FOV: H 72°(±3°) / V 50.5°(±3°), Detection Distance: 0.4~2m
	RGB Camera	215°FOV, Resolution 1280×720
	IMU	6DOF; Rate Range: ±2000dps; Accuracy: 0.01°
Charging & Battery	Battery	24V/30000mAh
		Endurance: 9 hours
		Full Charge Time: 5.5 hours
Motion	Navigation Mode	Free Navigation / Track Navigation / Hybrid Navigation / Follower
	Travel Speed	1.2m/s adjustable
	Gradeability	20mm
	Climbing Capability	8°
	Ground Clearance	35mm
	Travel Width	Minimum aisle width ≥75cm for robot travel
	Elevator Entry Width	≥ 75 cm
Door Entry Width	≥ 75 cm	
Positioning Accuracy	±5(mm)/±1(°)	